

# Converter Modules

## NPN to PNP Converter

- Convert a NPN sinking signal into a PNP sourcing signal.
- Supply Voltage : 10 to 30 VDC
- Converts the signal from one NPN device

Model Number	Description
RCM-1	NPN to PNP Converter only

## RCM-1



## NPN to PNP Converter With 12 VDC regulator

- Convert a NPN sinking signal into a PNP sourcing signal.
- Regulated 12 VDC @ 250 mA is available to power external devices
- Supply Voltage : 10 to 30 VDC
- Converts the signal from one NPN device

Model Number	Description
RCM-2	NPN to PNP Converter w/12 VDC

## RCM-2



## NPN to PNP Converter With 5 VDC regulator

- Convert a NPN sinking signal into a PNP sourcing signal.
- Regulated 5 VDC @ 250 mA is available to power external devices
- Supply Voltage : 10 to 30 VDC
- Converts the signal from one NPN device

Model Number	Description
RCM	NPN to PNP Converter w/5 VDC

## RCM

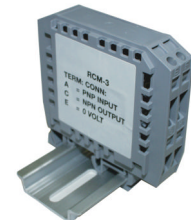


## PNP to NPN Converter

- Convert a PNP sourcing signal into a NPN sinking signal.
- Supply Voltage : 10 to 30 VDC
- Converts the signal from one PNP device

Model Number	Description
RCM-3	PNP to NPN Converter only

## RCM-3



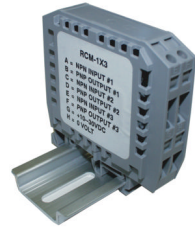
# Power Supplies / Converter Modules

## NPN to PNP Converter Three channel converter

- Convert a NPN sinking signal into a PNP sourcing signal.
- Supply Voltage : 10 to 30 VDC
- Converts the signal from three NPN devices

Model Number	Description
RCM-1X3	Three Channel NPN to PNP Converter

## RCM-1X3



## Power Supply / Sensor Controller

- Provides 12 VDC @ 75mA to power a sensor and converts an NPN signal to a relay contact.
- Supply Voltage : 110 VAC or 220 VAC 50/60 Hz
- SPDT contact rated 3A @ 250 VAC
- Converts the signal from one NPN device
- 8 Pin Octal Base Socket

Model Number	Description
PS930R-110	110 VAC Sensor Controller
PS930R-220	220 VAC Sensor Controller

## PS930R



## Power Supply / Sensor Controller

- Provide 26.5 VDC @ 100mA to power two sensors and convert either a NPN or PNP signal to a relay contact.
- SPST N.O. contact rated 0.6A @ 125 VAC (2 ea.)
- Supply Voltage : 125 VAC 60 Hz

Model Number	Description
RCM-ACPS2	2 In / 2 Out Sensor Controller

## RCM-ACPS2



## MOV Protection Module

- Surge suppression module designed to protect against transient voltages. The MOV is able to divert potentially high surge currents from entering the main circuit causing component failure.
- Rated at 175 max. AC voltage and 225 max. DC voltage
- 600 Amp current surge
- Eleven individual MOV's

Model Number	Description
RCM-MOV	MOV Protection Module

## RCM-MOV

